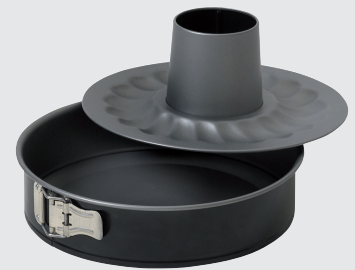




### EXOPAN STEEL NON-STICK SPRING FORM MOLD

Fine steel with a non-stick coating inside and protective enamel outside.

Removable mold with hinges and 2 interchangeable bottoms: 1 flat and 1 rosary shaped bottom with central chimney.



Item #	Ø"	H"
340215	9 1/2	2 1/2
340216	10	2 1/2
340217	11	2 1/2



### EXOPAN STEEL NON-STICK ROSARY MOLD

For cream desserts, ice creams etc. beautiful presentation, easy to cut.

Item #	Ø"	H"	Capacity
332282	6 1/3	2	25 1/3 oz.
332283	7 1/16	2 1/6	1 qt.



### STAINLESS STEEL SPONGE CAKE PAN

For biscuits, flans, rice cakes, etc. Straight edges.

Item #	L"	W"	H"	Wt
340305	23 1/4	15 1/4	2 1/4	1 lb. 4 oz.



### EXOPAN STEEL NON-STICK SPONGE CAKE PAN

Fine steel with a non-stick coating inside and protective enamel outside. Edge rolled around a copper wire for ultimate heat distribution.

Item #	L"	W"	H"
331311	11 7/8	7 7/8	1 3/8
331312	13 3/4	9 7/8	1 3/8
331313	15 3/4	11 7/8	1 3/8



### EXOPAN STEEL NON-STICK SQUARE CAKE PAN

Fine steel with a non-stick coating inside and protective enamel outside. Edge rolled around a copper wire for ultimate heat distribution.

Item #	L"	H"
331664	7 3/4	2
331666	9 1/2	2